

## Estonian Orienteering Week 2017

### Tartu, Estonia

### Bulletin 1

## WELCOME TO ESTONIA!

I am glad to welcome you to Estonia to attend the World Orienteering Championships in Tartu. I would encourage you to discover more of the **cosiest** country and our **prettiest** countryside with only 1,3 million inhabitants and 45 thousand square kilometres of land.

Some call Estonia the **smartest** country as it produces more start-ups per capita than any other country in Europe. Our small country has become the **best** in e-democracy and e-government, being the first in the world to introduce online political voting. Needless to say, there is a WiFi that covers nearly all of the territory.

Estonians have an identity card that allows us to access over 1,000 public services online, like healthcare and paying taxes. Being one of the most digitally advanced nations in the world, we decided to start the e-residency project and letting people from around the world become digital residents of Estonia online. Here you can start a new company online **fastest**, just in under 20 minutes.

We love innovation but we value our roots. Estonians have one of the **biggest** collections of folk songs in the world, with written records of 133000 folk songs. Our capital Tallinn is the **best** preserved medieval city in Northern Europe.

You might say Estonia is also the **greenest** country as **forests** cover about 50% of the territory, or around 2 million hectares. It is one of the most sparsely populated countries in Europe, but there are over 2000 islands, 1000 lakes and 7000 rivers.

Estonia is among the **safest** countries in the world as it lacks any real natural disasters. We also have the **cleanest** air in the world. Come here and take a **rest!**

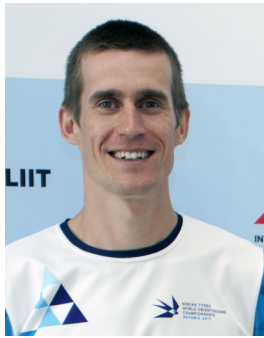


Meelis Mälberg  
Chairman of the Organizing Committee  
President of Estonian Orienteering Federation

## WELCOME TO ESTONIAN ORIENTEERING WEEK 2017!

Estonia is one of the smallest countries ever to organize the World Orienteering Championships and is wishing to use this chance to bring orienteering to a new level in Estonia in terms of visibility, level of athletes and also the level of organization.

With less than a year to go, many runners and orienteering fans are excited, giving the organizers more inspiration to continue the work towards a great WOC week in July 2017.



To support this magnificent and awesome event, Estonian Orienteering Week will be the public event at the same time with WOC in the same terrains.

Markus Puusepp  
WOC 2017 Event Director



## VENUE AND ACCESS

Estonian Orienteering Week takes place together with the 2017 Nokian Tyres World Orienteering Championships in Tartu and South Estonia, with the competition terrains in Tartu, Viljandi, Rõuge and Elva-Vitipalu.

Tartu is a well-known university town and the intellectual capital of Estonia.

The Hanseatic town lies on the banks of the River Emajõgi and is the second largest town in the country and the oldest in the Baltic States. It was first mentioned almost a thousand years ago and can be called the cradle of the Estonian Song Festival, Estonian theatre and the Estonian state.

## How to reach Tartu

Tartu is the centre for South Estonia and can be accessed by car, by train, by bus and by plane.

### By car:

Hertz is the Official Rental Car partner for Estonian Orienteering Week. Hertz offices are located in Tallinn and Tartu. For booking at [www.hertz.com](http://www.hertz.com) use CDP code 809583 (CDP code can be used all over Europe!).

### By train:

From Tallinn  
From Valga (at the Latvian border)  
From Koidula (at the Russian border)  
See more at: [www.elron.ee](http://www.elron.ee)

### By bus:

From Tallinn and Tallinn Airport – 180 km / 2,5 hours  
From Riga and Riga Airport – 250 km / 4 hours  
Bus routes also available from many Central and Eastern European cities.  
See more at: [www.tpilet.ee](http://www.tpilet.ee)

### By plane:

Direct flights from many European cities to Tallinn Airport.  
From Helsinki Vantaa airport with Finnair to Tartu Airport.

**See more travel possibilities at** <http://www.visitestonia.com/en/travel-and-transportation> **and** <http://www.visittartu.com/en/transport/>

## GROUP TRAVEL

A list of known groups (as of December 2016) that are offering organized trips to Estonian Orienteering Week and World Orienteering Championships:

[Daniel's Travels](#) (Finland)  
[County Travel](#) (Sweden)  
[Swiss O Tours](#) (Switzerland)  
[Suunnistusmatkat Oy](#) (Finland)

If you want your group added or removed, please contact [info@sk100.ee](mailto:info@sk100.ee) .

## CONTACT INFORMATION

Event Director: Timmo Tammemäe

Telephone: +372 529 4233

Homepage: [www.tow.ee](http://www.tow.ee)

Email: [info@sk100.ee](mailto:info@sk100.ee)



## EVENT CENTRE

The Event Centre for Estonian Orienteering Week will be located in Tartu Tamme Gymnasium ([Nooruse 9, Tartu](#)), 3 km from the city centre.

## PROGRAMME

Estonian Orienteering Week consists of 6 days of competitions with 2 rest days in between. There are 2 sprint/urban races and 4 forest races.

All the races are held within walking distance from the WOC competitions giving you the opportunity to cheer the World's best orienteers.

Date	Venue	Estonian Orienteering Week	WOC
Friday, June 30	Tartu		Sprint Q
Saturday, July 1	Tartu	Sprint 12:00-14:00	Sprint F
Sunday, July 2	Viljandi	Sprint 18:30-20:30	Sprint Relay
Monday, July 3		Activities, excursions	
Tuesday, July 4	Rõuge	Long Distance 10:00-14:00	Long Distance
Wednesday, July 5	Rõuge	Long Distance 10:00-14:00	
Thursday, July 6	Elva-Vitipalu	Activities, excursions	Middle Distance
Friday, July 7	Elva-Vitipalu	Middle Distance 10:00-13:00	Relay
Saturday, July 8	Elva-Vitipalu	Middle Distance 9:00-12:00 EOW Award ceremony 13:00-13:30	

## CLASSES AND REGISTRATION

From the youngest to the oldest, for the technical and hobby orienteers. Special courses for children and open courses for on-site registration.

WM8-NR, WM9-NR, WM10-TR, WM12-TR, WM12, WM14, WM16, WM18, WM20, WM21E, WM21A, WM21B, WM35, WM40, WM45, WM50, WM55, WM60, WM65, WM70, WM75, WM80, OPEN1, OPEN2, OPEN3, OPEN4, OPEN5

\* NR - marked course (markings from control to control)

\*\* TR - assisted course (markings lead to the vicinity of the control)

E - elite; A - technical; B - easy

### Registration

1. Registration will be opened on 1st of December 2016 at: <http://register.sk100.ee/>
2. In EOW, it is possible as well to enter for one competition day only.
3. Entries become valid only after payment of the entry fee.

The entry fee and rent of SI-card(s) must be paid on registration:

MTÜ Spordiklubi 100 (Sõpruse pst 198-52, 13423 Tallinn, Estonia),

IBAN: EE112200221047956653,

BIC: HABAE2X (Swedbank),

Swedbank address: Liivalaia 8, 15040 Tallinn, Estonia

### O-week Pass

- Pass gives you the right to participate on all O-Week competitions
- Pass prices (€):

Class	Before March 1, 2017	Before May 5, 2017	Before June 19, 2017
MW 8 – 12	15 €	15 €	20 €
MW 14 – 18	30 €	35 €	40 €
MW20, MW65-80	50 €	60 €	75 €
MW 21-60	80 €	100 €	120 €
OPEN YOUTH (up to 17 years)	30 €	30 €	30 €
OPEN ADULTS (18 years and older)	50 €	50 €	50 €

### Entry fees per day (€):

Class	Before March 1, 2017	Before May 5, 2017	Before June 19, 2017
<b>MW 8 – 12</b>	3 €	3 €	4 €
<b>MW 14 – 18</b>	6 €	7 €	8 €
<b>MW20, MW65-80</b>	10 €	12 €	15 €
<b>MW 21-60</b>	16 €	20 €	24 €
<b>OPEN YOUTH (up to 17 years)</b>	6 €	6 €	6 €
<b>OPEN ADULTS (18 years and older)</b>	10 €	10 €	10 €

\*Registration fee for Open courses on the competition day: Open YOUTH - 8 €, Open ADULTS 15 €

### Changes and late entries

Changes before June 19, 2017 are free of charge. Late entries are possible from June 19, 2017 provided that vacancies still exist. From June 19, 2017 the fee for changes and late entry is additional 10 EUR (except classes MW 8 - 20).

### ELECTRONIC PUNCHING SYSTEM

The SPORTIdent punching system will be used for all races. All models of SI-Card are accepted. Air+ Touch Free system is not activated in SPORTIdent stations and therefore classic direct punching must be used. SI-cards can be rented from the organisers by choosing this option in the entry form. The SI-card number and competitor name are connected each day at the competition start (similarly to Jukola, 10-mila and 25-manna) and therefore **you do not need to provide the number of your SI-card at registration.**

### RENTED SPORTIDENT CARDS

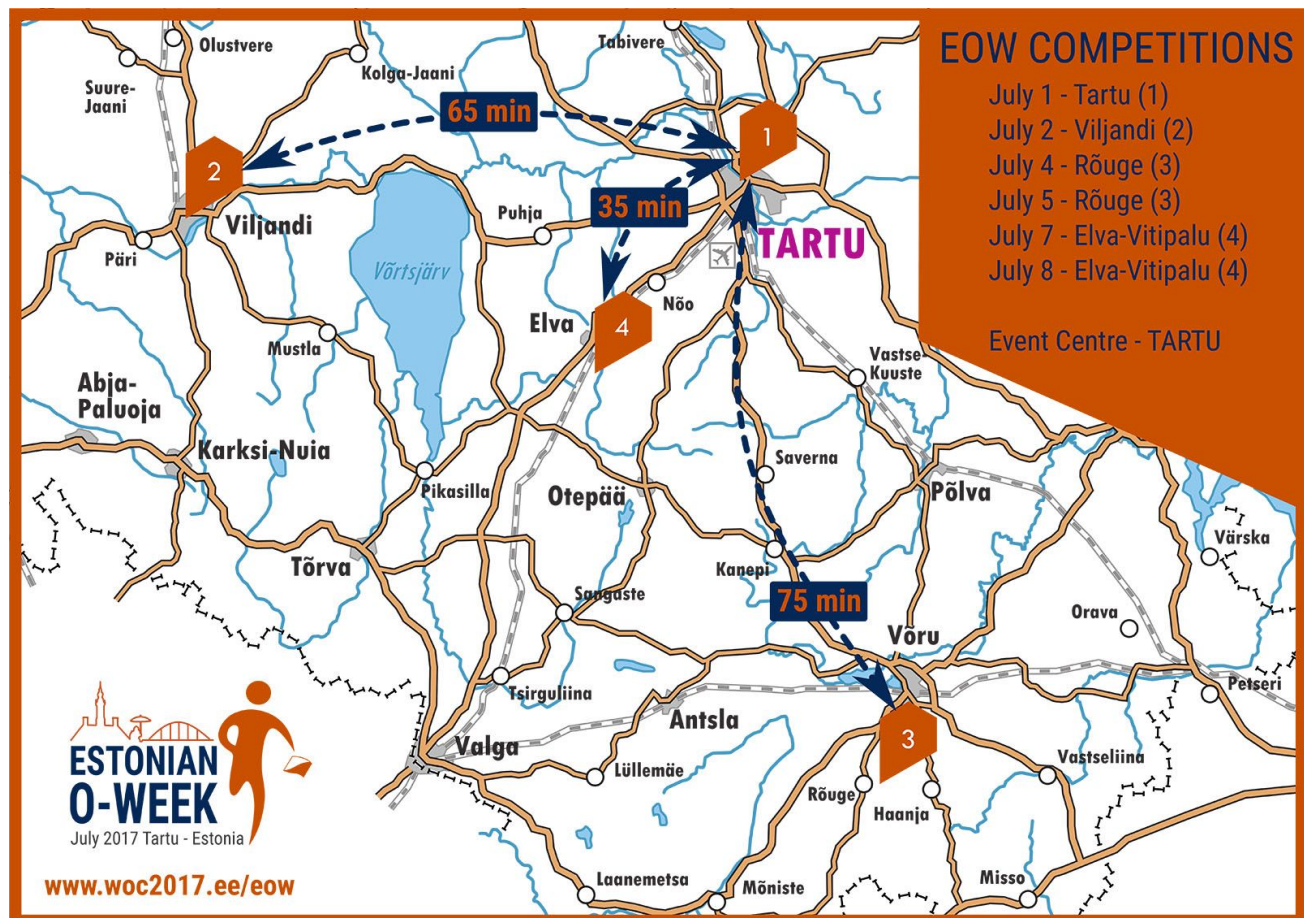
Renting fee for the entire week is €10 and single day €2 if booked in advance.

Without pre-registration the renting fee is €3 for one day or €15 for the entire week.

Please return rented SI-card after passing the finish line or at the Information desk after your last race. A charge of €60 will be made for the loss or non-return of rented cards.



## COMPETITION AREAS



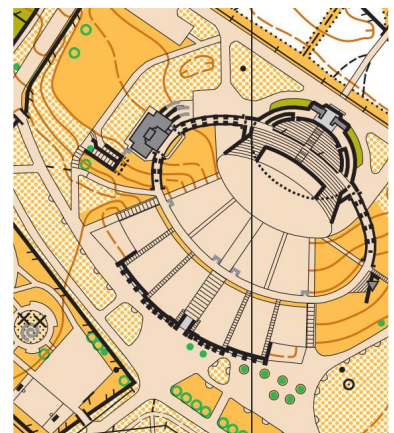
### July 1, Tartu SPRINT DISTANCE

Sprint will be held around Tartu Song Festival Grounds which is a mix of park area with ski tracks.

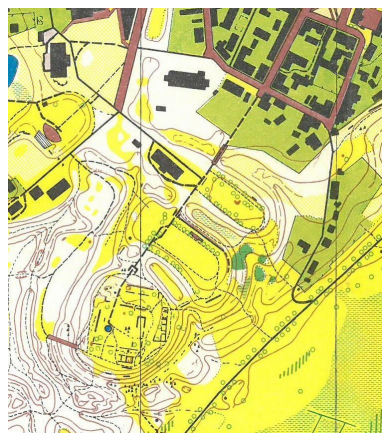
Map: ISSOM standard, scale 1:4000, contour interval 2.5m, will be remapped in 2017.

Previous map:

[http://www.woc2017.ee/woc/1\\_Tartu\\_town.gif](http://www.woc2017.ee/woc/1_Tartu_town.gif)



### July 2, Viljandi SPRINT DISTANCE

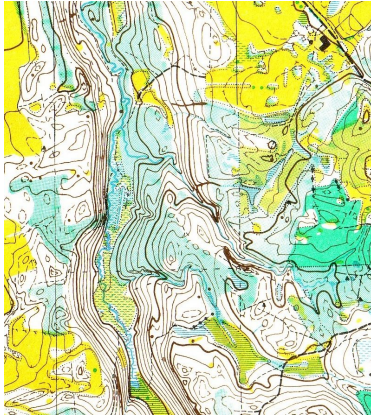


Sprint terrain in Viljandi has two distinctive areas, the Castle hills with steep slopes, ruins, and the picturesque old town.

Map: ISSOM standard, scale 1:4000, contour interval 2.5m, will be remapped in 2017.

Previous map: [http://www.woc2017.ee/woc/2\\_Viljandi\\_town.gif](http://www.woc2017.ee/woc/2_Viljandi_town.gif)

## July 4-5, Rõuge LONG DISTANCES

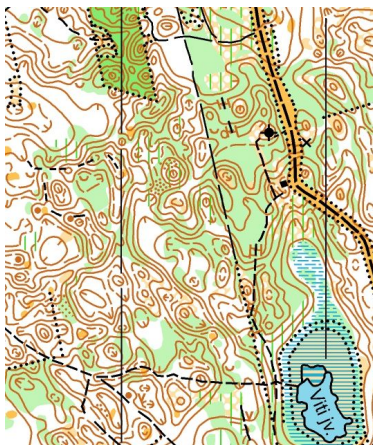


The Long Distances terrain is stretching over an area between the highest hill and the deepest lake of Estonia. Runnability varies from good in the coniferous forests to poor in the deciduous forests. Many marshes can be found in the terrain.

Map: ISOM standard, scale 1:10 000 or 1:15:000, contour interval 5m, will be remapped in 2017.

Previous maps: [http://www.woc2017.ee/woc/7B\\_Rouge.gif](http://www.woc2017.ee/woc/7B_Rouge.gif)

## July 7-8, Elva-Vitipalu MIDDLE DISTANCES



Middle Distances terrain offer very detailed contours with many depressions and ridges between them. Runnability and visibility vary from very good to poor. Tartu Ski Marathon track is passing through the area.

Map: ISOM standard, scale 1:10 000 or 1:7 500, contour interval 2,5m, will be remapped in 2017.

Previous map: [http://www.woc2017.ee/woc/3\\_Elva\\_Vitipalu.gif](http://www.woc2017.ee/woc/3_Elva_Vitipalu.gif)

## CLOTHING

There are no regulations regarding clothing. Choice of footwear is free for Long Distance and Middle Distance races. Spike shoes are not allowed for Sprint Distance races.

## ACCOMMODATION

Tartu offers wide range of accommodations from 4 stars hotels to university dormitories all within walking distance from the Event Centre and the Old Town.

More information about accommodation in Estonia:

[Visitestonia.com](http://Visitestonia.com), [www.visittartu.com](http://www.visittartu.com)

## VISA

According to the current regulations, citizens of some countries must obtain a visa in order to enter Estonia. Please check the website of the Estonian Ministry of Foreign Affairs for more information: <http://vm.ee/en/taxonomy/term/41>



## CLIMATE AND HAZARDS

Estonian summers are usually mild with a chance of rain. The average temperature in July, which is considered the warmest month of the year, is 16...17 °C, although the temperatures can reach more than 30°C on the hot days.

Ticks, carrying encephalitis and Lyme-disease are common in Estonia.

## SPONSORS



**KOLMEKS**



## SUPPORTERS



Verba



## INSTITUTIONAL PARTNERS



Euroopa Liit  
Euroopa  
Regionaalarengu Fond



Eesti  
tuleviku heaks